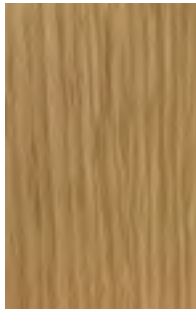


# Wood Finishes for Taylor Series

Please Specify When Ordering

oak finishes



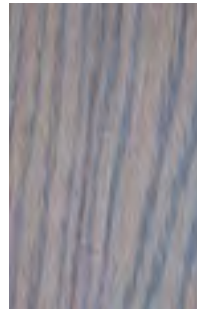
rift cut white oak (RO)



golden oak (GO)



harvest oak (HO)



weathered oak (WO)



black oak (BO)

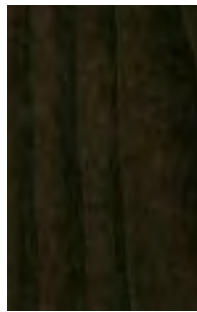
ash finishes



natural oak (NO)

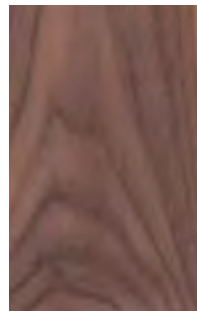


blanca on ash (BA)



ink wash on ash (IW)

walnut finishes

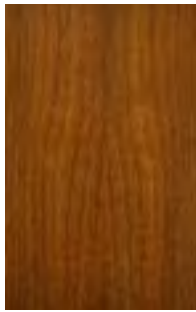


natural walnut (NW)



kona walnut (KW)

cherry finishes



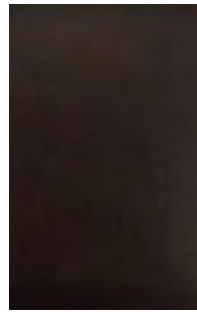
light cherry (LC)



amber cherry (AC)



dakota cherry (DC)



cherry roast (CR)

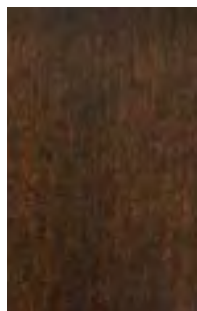
maple finishes



natural maple (NM)



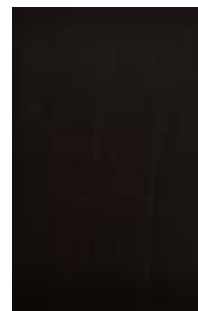
caramel maple (RW)



truffle maple (TM)



fawn maple (FM)



java maple (JM)

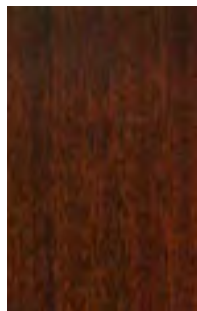
sapele finishes



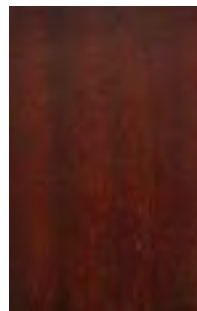
almond sapele (AS)



hazelnut sapele (HS)



tawny sapele (TS)

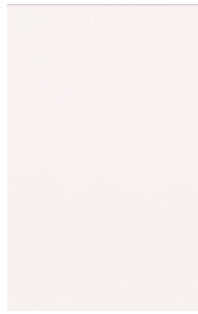


brick sapele (BS)

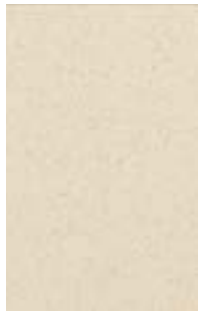
# Options for Taylor Series

Please Specify When Ordering

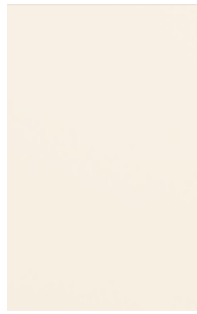
standard solid surface finishes



designer white (SSDW)



beige tempest (SSBT)



antique white (SSAW)

tackboard fabrics



sandstone (TBS)



dark grey (TBDG)



light grey (TBLG)

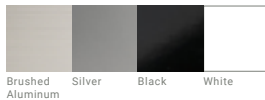
power mods



### P-16-Mini - \$325 List

- In Surface Power Module
- 1 power outlet & 2 powered USB-A outlets
- Spill-Resistant Receptacles
- 3.75" x 2.25"
- Other Configurations Available

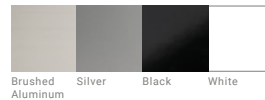
Finishes -



### P-18 - \$450 List

- Desk Top Power Module
- 1 power outlet, 1 powered USB-A & 1 powered USB-C
- 60 Watt Charging Port
- 8" x 2.8" x 1.6"
- Other Configurations Available

Finishes -



### P-19 - \$185 List

- In Surface Power Module
- 2 power outlets & 2 powered USB-A outlets
- Tamper Resistant Receptacles
- 3" Diameter
- Other Configurations Available

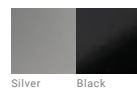
Finishes -



### P-20 - \$210 List

- Under Desk Power Module
- 6 power outlet
- Circuit Breaker with On/OFF Switch
- 13.6" x 2.15" x 2.06"
- Other Configurations Available

Finishes -



# Options for Taylor Series

Please Specify When Ordering

2" grommets



GPB  
2" Black Plastic  
Grommet



GMB  
2" Black Metal  
Grommet



GMN  
2" Nickel Metal  
Grommet



GMC  
2" Chrome Metal  
Grommet

profile A metal doors



MDPA-BS  
Brushed Steel



MDPA-AA  
Anodized Aluminum



MDPA-BA  
Black Aluminum



MDPA-WA  
White Aluminum

profile B metal doors



MDPB-BS  
Brushed Steel



MDPB-AA  
Anodized Aluminum



MDPB-BA  
Black Aluminum

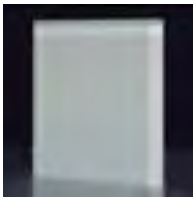


MDPB-WA  
White Aluminum

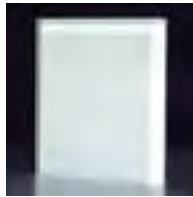
glass inserts



soft etch



pearl etch



white back painted

wood edge details



-A



-B



-C



-E



-F



-G

solid surface edges



-SSC



-SSG

# Options for Taylor Series

Please Specify When Ordering

drawer pulls

## DP6 - Metropolitan Pull



**Finish:**  
Anodized Aluminum  
**Sizes:**  
DP5A-AA 6 5/8"  
DP5B-AA 12 15/16"



**Finish:**  
Matte Black Powdercoat  
**Sizes:**  
DP7A-BP 6 5/8"  
DP7B-BP 12 15/16"

## DP7 - Bar Pull



**Finish:**  
Anodized Aluminum  
**Sizes:**  
DP7A-AA 6 5/8"  
DP7B-AA 12 15/16"  
DP7C-AA 23 3/4"



**Finish:**  
Matte Black Powdercoat  
**Sizes:**  
DP7A-BP 6 5/8"  
DP7B-BP 12 15/16"  
DP7C-BP 16 1/4"



**Finish:**  
Stainless Steel  
**Sizes:**  
DP7A-ST 6 5/8"  
DP7B-ST 12 15/16"  
DP7C-ST 16 1/4"



**Finish:**  
Polished Copper  
**Sizes:**  
DP7A-AA 6 5/8"  
DP7B-AA 12 15/16"

## DP10



**Finish:**  
Anodized Aluminum  
**Sizes:**  
DP10A-AA 10"  
DP10B-AA 15"



**Finish:**  
Matte Black Powdercoat  
**Sizes:**  
DP10A-BP 10"  
DP10B-BP 15"

## DP11



**Finish:**  
Anodized Aluminum  
**Sizes:**  
DP11A-AA 5 1/16"  
DP11B-AA 15 1/8"



**Finish:**  
Matte Black Powdercoat  
**Sizes:**  
DP11A-BP 5 1/16"  
DP11B-BP 15 1/8"

## DP14 Tab Pull



**Finish:**  
Anodized Aluminum  
**Sizes:**  
DP14A-AA 4"  
DP14B-AA 17 1/8"



**Finish:**  
Matte Black Powdercoat  
**Sizes:**  
DP14A-BP 4"  
DP14B-BP 17 1/8"



**Finish:**  
Stainless Steel  
**Sizes:**  
DP14A-ST 4"  
DP14B-ST 17 1/8"



**Finish:**  
White Powdercoat  
**Sizes:**  
DP14A-WP 4"  
DP14B-WP 17 1/8"



**Finish:**  
Chrome  
**Sizes:**  
DP14A-CH 4"  
DP14B-CH 17 1/8"

## DP15



**Finish:**  
Brushed Nickel  
**Sizes:**  
DP15A-BN 8"  
DP15B-BN 13"



**Finish:**  
Matte Black Powdercoat  
**Sizes:**  
DP15A-BP 6 5/8"  
DP15B-BP 12 15/16"



**Finish:**  
Stainless Steel  
**Sizes:**  
DP15A-ST 6 5/8"  
DP15B-ST 12 15/16"

## Pull Placement for Taylor Series -Please Specify When Ordering

### Centered - Standard Pulls



### Centered - Multiple Lat



### Centered - Large Pull Lats



### User Justified - Standard Pulls



### User Justified - Multiple Lat



### User Justified - Large Pull Lats

