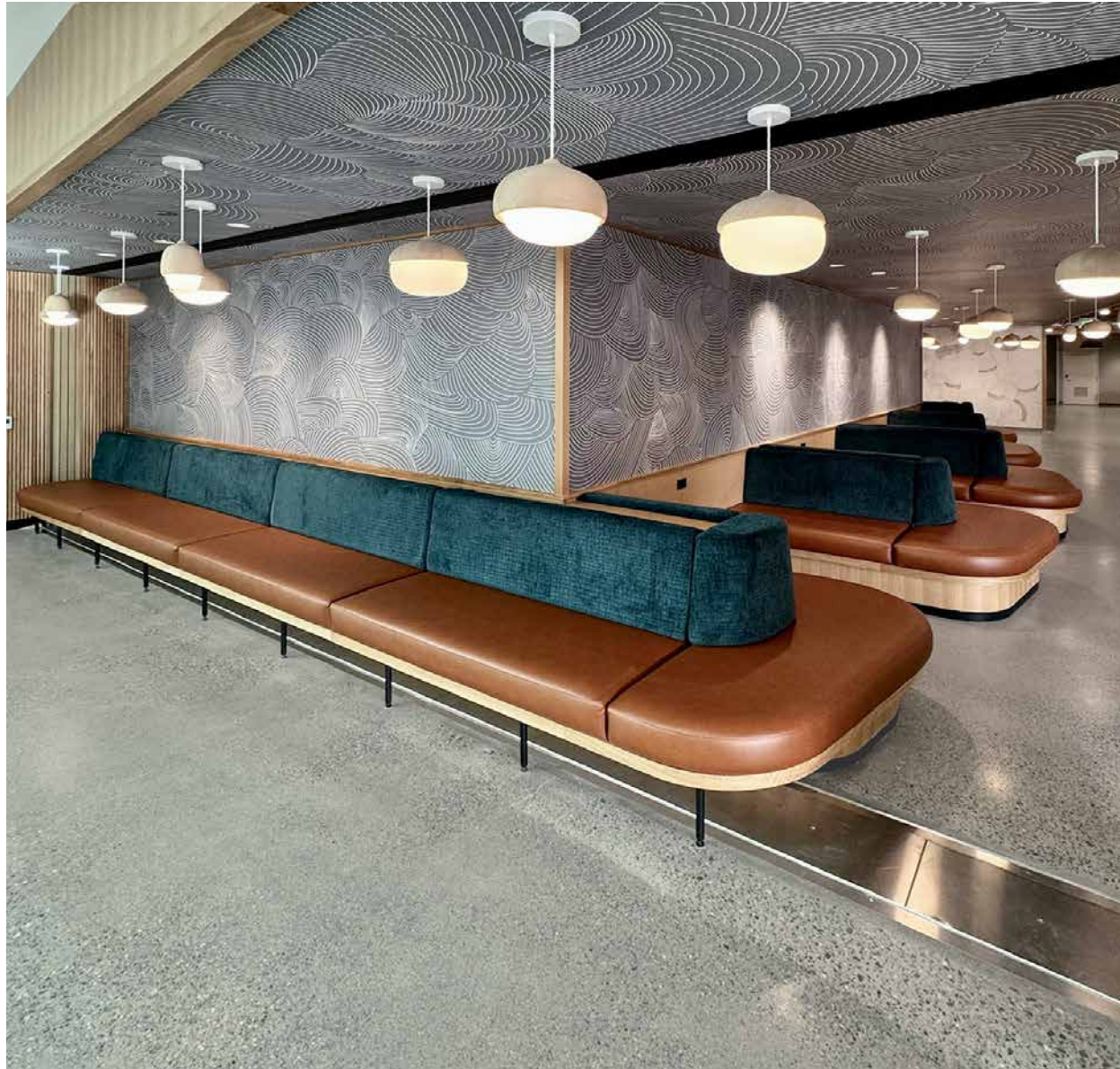




BANQUETTES  
coriander   
DESIGNS





For the past 45 years, we've designed, engineered, and built banquette seating solutions and cafe tables for educational institutions, healthcare facilities, top hotel brands, and the workplace. Our work can be seen across the U.S. as a proud representation of 100% American made products that stand the test of time, design, and use. Our commitment to continuous improvement in our factory capabilities, our talented craftspeople, and our dedicated customer care team, ensures our ability to meet and exceed the needs of our clients. As a result we have become the go-to-partner for Architects, Designers, and Furniture Dealers, who are developing unique environments for many of the world's most innovative companies. We invite you to take a look at our work. If you can dream it, we can build it.





## Committed to quality

All our pieces are built to last in our factory by our experienced and dedicated craftspeople. Our standard products, including our Kenzie Modular Collection, all come with a 10 year warranty.

Our frames are made from the finest quality, FAS Grade Lumber available. All frame joints are assembled using mortise and tenon construction.

Upholstered seat frames are constructed from solid core plywood with 1/4" diameter, quarter round radius on the inside of the frame to prevent excessive wear on the foam. The seat suspension system is System 80 low stretch, high resistance unidirectional webbing that allows for equal tension on all webbing straps to ensure the same seat softness on all seats.

The upholstered back frame is constructed using hardwoods, contoured for comfort and ergonomic posture. System 80 webbing is incorporated into the frame and covered with woven polypropylene.

We use premium high density, high resilient foam cushioning. The foam is designed to cradle the body contours, without compromising support. All foam used at Coriander Designs passes California's rigid standards for flame resistance; Ca117. All our foam is CFC free.



# Kenzie Collection

Our Kenzie Modular Seating defines any space as a large sweeping curved or straight unit or as a collaborative area.

The curved lines of these tailored lounge pieces are well complemented by six different ottoman choices, our Kenzie Laptop Table, Hattie Height Adjustable Laptop Table, and six in-line, and free-standing tables, as well as our complete Cafe Table Collection.

Make it yours with a choice of high, low or no back, wood or metal feet and curved, serpentine, or straight configurations.

Additional options for multiple applied fabrics, moisture barriers, upholstered arms, Solid Surface arm caps, and custom finishes are also available.

Add a flush mount Power Module in the seat, seat back, or in-line and free-standing tables with 2 receptacles and dual USB for functionality and accessibility.





# Kenzie Collection





# Custom Solutions

With our flexible manufacturing process we are able to provide modifications to existing products or designs and engineer completely custom solutions.

Our collaborative process with designers, distribution partners and end users ensures we meet the comfort, durability and aesthetic needs of our clients.

We have over 44,000 square feet of production space outfitted with a wood shop, full upholstery department, and multiple finishing booths.

Over the years, we've engineered and built countless custom pieces as one offs and large scale roll outs. Our capabilities enable us to become a one stop shop for every piece of the project from seating, to case goods, tables, banquettes, and more.

We continue to invest in our factory, to ensure we are fully equipped to handle any custom project for our clients. With total control over our materials and all of our labor force working together under one roof, we are confident that all the products leaving our factory floor are made with the highest quality.





# Custom Solutions







## Sustainable Quality

At Coriander Designs, we acknowledge our obligation to maintain and nurture the ecology of our planet and as a result, have set up our organization to practice environmentally preferable manufacturing.

All the wood we use is FAS select grade lumber, harvested in accordance with Woodworking Industry Standards. We are an FSC® Certified shop, and can offer FSC certified materials when requested by clients. FSC C0-41262

Our premium high density, high resilient foam cushioning is designed to cradle the body contours without compromising support and is CFC free and recyclable.

We offer an extensive selection of fabric choices, many of which are natural or made using reconstituted materials.

The varnish we use is formaldehyde and HAPs free, VOC compliant and free of lead and chromate.

Our products may also contribute to LEED certification.

Additional to the products we make, the factory we make them in is also sustainable with water retention and purification pools, a state of the art air filtration system and recyclable wood and fabric programs with local schools and charities.





coriander   
DESIGNS

[corianderdesigns.com](http://corianderdesigns.com)  
[meyerwells.com](http://meyerwells.com)

[info@corianderdesigns.com](mailto:info@corianderdesigns.com)  
425.402.8001

20485 144th Ave NE  
Woodinville, WA 98072

