



BANQUETTES

coriander 
DESIGNS



Over the past 44 years, we've designed, engineered, and built banquettes and seating solutions for educational institutions, healthcare facilities, and the workplace.

As a result we have become the go-to-partner for Architects, Designers, and Furniture Dealers, who are developing unique environments for many of the world's most innovative companies.



Committed to quality

All our pieces are built to last in our factory by our experienced and dedicated craftspeople. Our standard products, including our Kenzie Modular Collection, all come with a 10 year warranty.

Our frames are made from the finest quality, FAS Grade Lumber available. All frame joints are assembled using mortise and tenon construction.

Upholstered seat frames are constructed from solid core plywood with 1/4" diameter, quarter round radius on the inside of the frame to prevent excessive wear on the foam. The seat suspension system is System 80 low stretch, high resistance unidirectional webbing that allows for equal tension on all webbing straps to ensure the same seat softness on all seats.

The upholstered back frame is constructed using hardwoods, contoured for comfort and ergonomic posture. System 80 webbing is incorporated into the frame and covered with woven polypropylene.

We use premium high density, high resilient foam cushioning. The foam is designed to cradle the body contours, without compromising support. All foam used at Coriander Designs passes California's rigid standards for flame resistance; Ca117. All our foam is CFC free.

Kenzie Collection

Kenzie Modular Seating defines any space as a large sweeping curved unit or as a collaborative area. The quality crafted tailored lounge pieces, available with or without a curve, are complemented by six different ottoman choices.

Optional flush mount data units in the seat base add functionality and accessibility to the space.

With Multiple Leg choices, back options and an expansive range of finishes, you have the luxury to create cohesive and diverse styles with our Kenzie Modular Furniture Line.



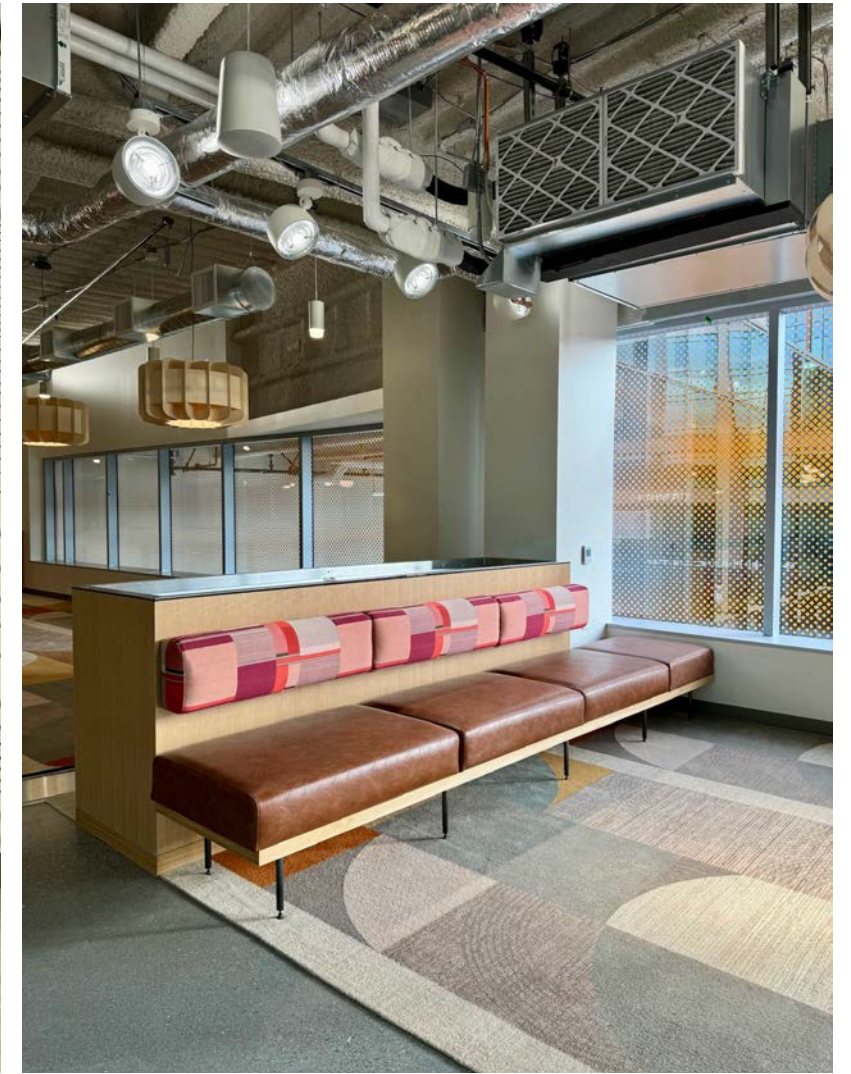
Kenzie Collection



Custom Solutions

With our flexible manufacturing process we are able to provide modifications to existing products or designs and engineer completely custom solutions.

Our collaborative process with designers, distribution partners and end users ensures we meet the comfort, durability and aesthetic needs of our clients.



Custom Solutions





Sustainable Quality

At Coriander Designs, we acknowledge our obligation to maintain and nurture the ecology of our planet and as a result, have set up our organization to practice environmentally preferable manufacturing.

All the wood we use is FAS select grade lumber, harvested in accordance with Woodworking Industry Standards.

Our premium high density, high resilient foam cushioning is designed to cradle the body contours without compromising support and is CFC free and recyclable.

We offer an extensive selection of fabric choices, many of which are natural or made using reconstituted materials.

The varnish we use is formaldehyde and HAPs free, VOC compliant and free of lead and chromate.

Our products may also contribute to LEED certification.

Additional to the products we make, the factory we make them in is also sustainable with water retention and purification pools, a state of the art air filtration system and recyclable wood and fabric programs with local schools and charities.



coriander 
DESIGNS

corianderdesigns.com
meyerwells.com

info@corianderdesigns.com
425.402.8001

20485 144th Ave NE
Woodinville, WA 98072



Made
in the
U.S.A